

## **COVID-19, Climate Change, Equity & Justice...**

**Kimberly Gordon-Achebe, MD, FAPA**  
Assistant Professor of Clinical Psychiatry  
Tulane University School of Medicine  
Medical Director of Intensive Services  
Hope Health Systems, Inc.

# MY JOURNEY WITH CLIMATE CHANGE



## **CLIMATE CHANGE CREATES SEVERE AND DANGEROUS**

- HEAVY RAINFALLS
- DANGEROUS STORMS/HURRICANES/TORNADOES
- FLOODS
- DROUGHTS
- HEAT WAVES
- WILD- FIRES

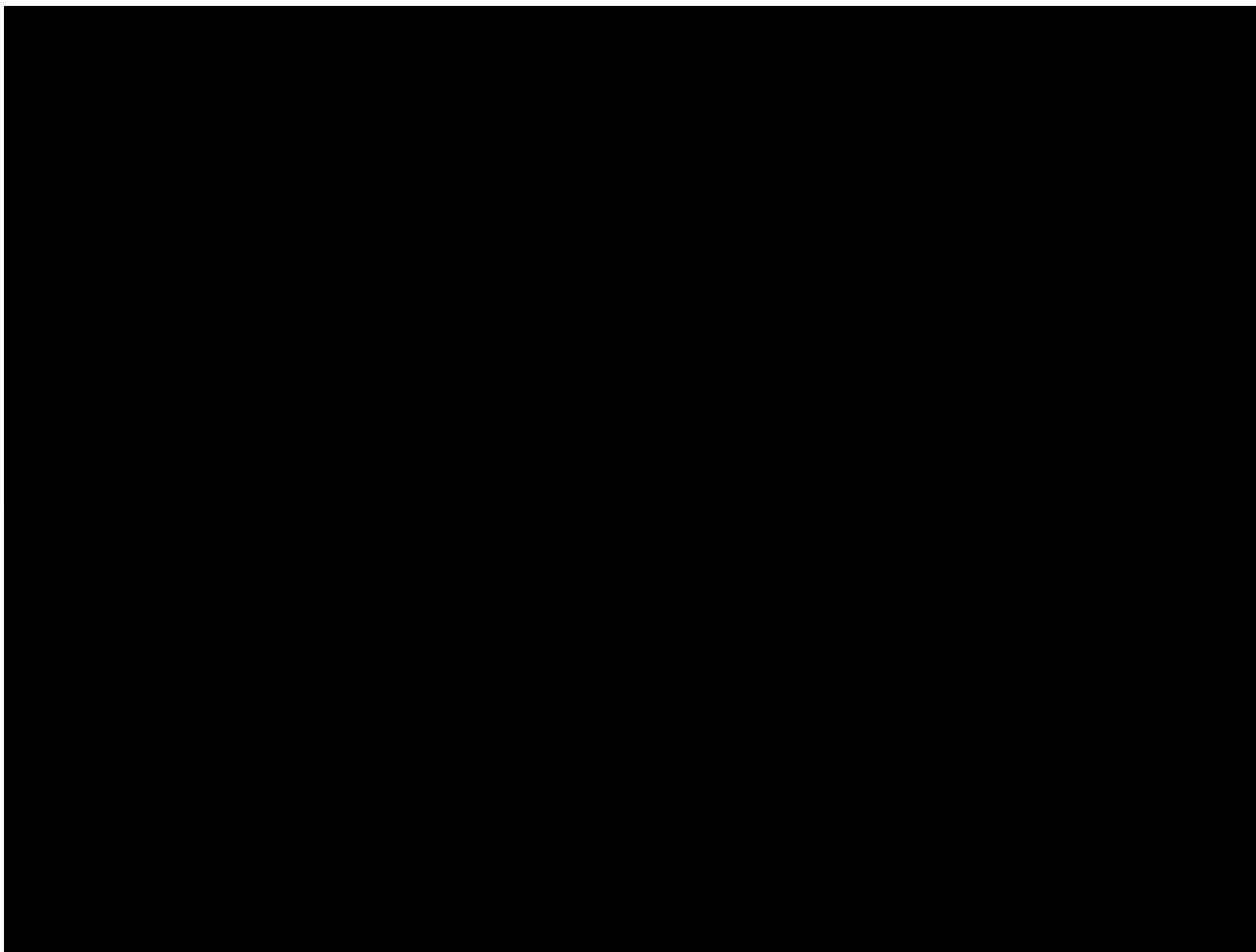
## **CLIMATE CHANGE THREATENS OUR HEALTH**

- CHANGING THE SPREAD OF INFECTIOUS DISEASES
- INTERFERING WITH OUR FOOD SOURCES
- STRAINING VITAL INFRASTRUCTURE LIKE ROADS AND BRIDGES

*Human activities – specifically, the burning of fossil fuels for electricity and transportation – are the major driver of climate change.*

# CLIMATE CHANGE IMPACT ON HUMAN HEALTH

---





# WE CAN'T BREATHE



# BLACK AMERICANS AND CLIMATE CHANGE



*Climate change acts as a multiplier of many of the problems that Black Americans face related to environmental racism, poverty, and hunger.*

- ❖ Racism, Racial Bias and Discrimination
- ❖ Racial Profiling
- ❖ Institutional Racism
- ❖ Social & **Environmental** Determinants of Health
- ❖ Trauma





Systemic Racism and socioeconomic disadvantages lead to the overrepresentation of minorities in housing and work environments that lead to elevated risk of exposure to climate change, *major hardships, conflicts, and disruptions such as crime, violence, material deprivation, loss of loved ones, recurrent financial strain, relationship conflicts, unemployment, and underemployment*

## SOCIAL DETERMINANTS OF HEALTH

The social determinants of health are the conditions in which we are born, we grow and age, and in which we live and work. The factors below impact on our health and wellbeing.



Childhood experiences



Housing



Education



Social support



Family income



Employment



Our communities



Access to health services

Source: NHS Health Scotland

Williams 2016



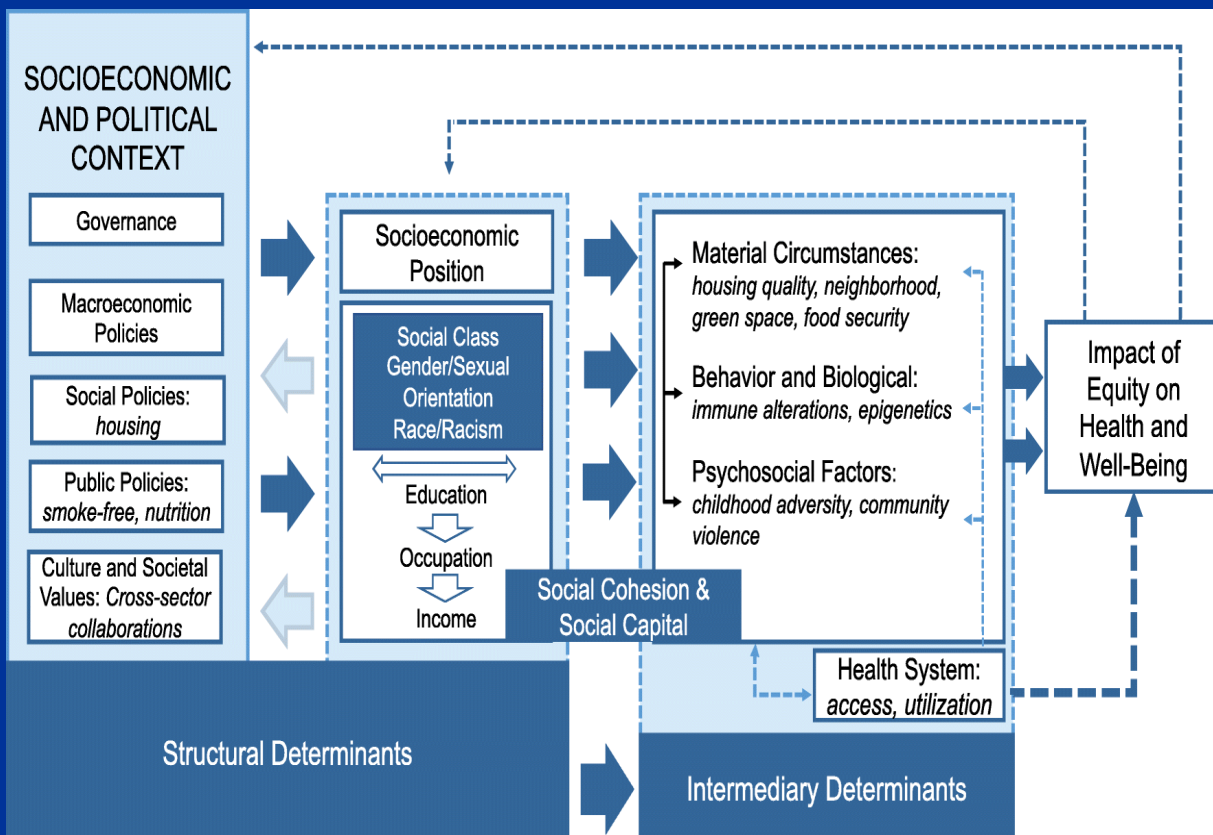
# CLIMATE CHANGE IS WIPING OUT HARRIET TUBMAN'S HOMELAND, AND WE'RE DOING LITTLE ABOUT IT

AMERICAN  
PSYCHIATRIC  
ASSOCIATION





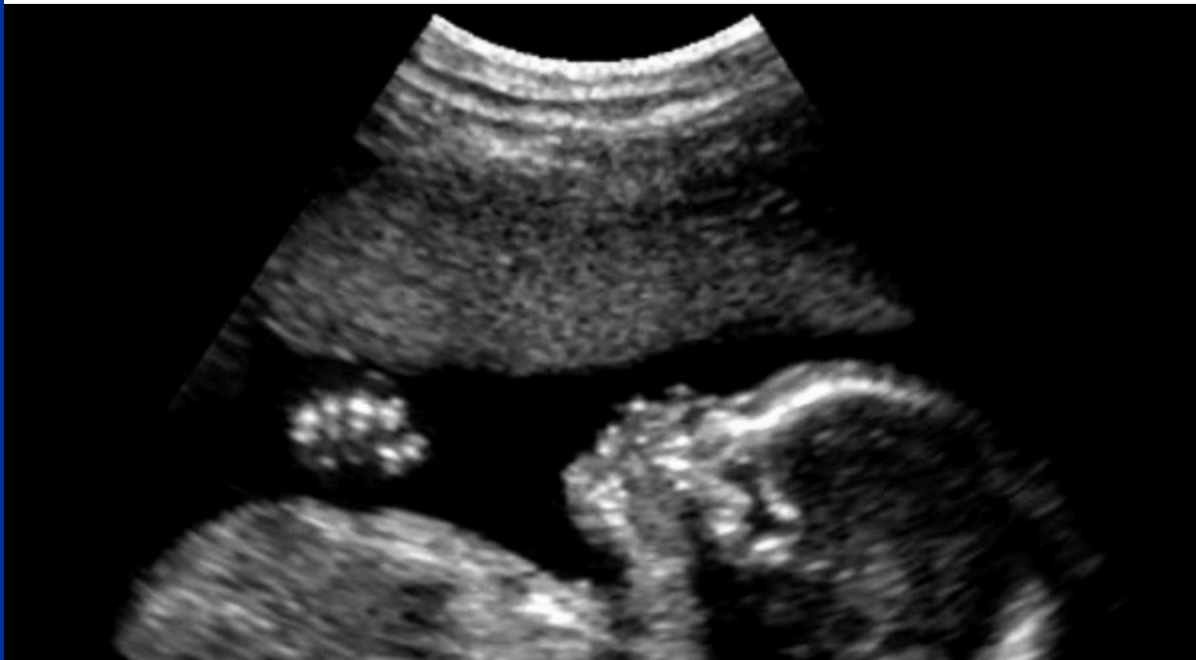
# AIR POLLUTION, WATER POLLUTION, EQUITY AND CLIMATE CHANGE?



Sullivan, K., Thakur, N. Structural and Social Determinants of Health in Asthma in Developed Economies: a Scoping Review of Literature Published Between 2014 and 2019. *Curr Allergy Asthma Rep* 20, 5 (2020). <https://doi.org/10.1007/s11882-020-0899-6>

# ***Climate Change Tied to Pregnancy Risks, Affecting Black Mothers Most***

Women exposed to high temperatures or air pollution are more likely to have premature, underweight or stillborn babies, a look at 32 million U.S. births found.





*Lisa Larson-Walker/ProPublica*

## **CORONAVIRUS**

### **A Teenager Didn't Do Her Online Schoolwork. So a Judge Sent Her to Juvenile Detention.**

A 15-year-old in Michigan was incarcerated during the coronavirus pandemic after a judge ruled that not completing her schoolwork violated her probation. "It just doesn't make any sense," said the girl's mother.



## APA Official Actions

### Role of Psychiatrists in Addressing Care for People Affected by Forced Displacement

Approved by the Board of Trustees, July 2017

Approved by the Assembly, May 2017

“Policy documents are approved by the APA Assembly and Board of Trustees. . . These are . . . position statements that define APA official policy on specific subjects. . .” – *APA Operations Manual*

#### Issue:

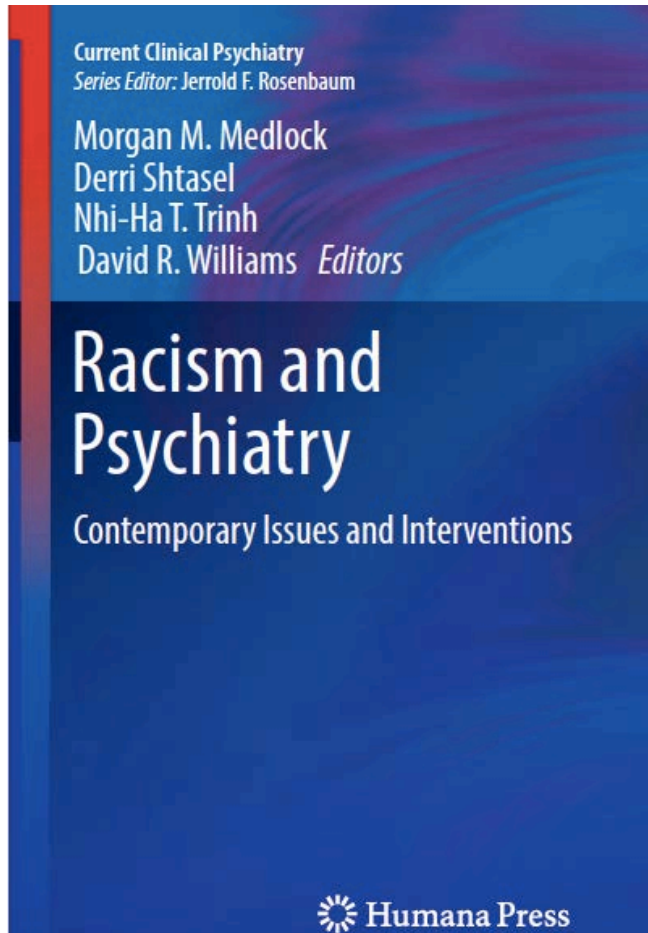
An unprecedented level of migration due to a variety of socio-political and economic factors has marked the 21st century. Currently, 65.3 million persons worldwide have been forcibly displaced by armed conflict, political oppression, starvation, or other catastrophes (1). While people who are displaced both within and out of countries can demonstrate high levels of resiliency, they can also experience disabling posttraumatic disorders or other consequences that adversely impact medical, psychological, social, and spiritual well-being. These consequences can range from demoralization to various sequelae involving simple and complex trauma complicated by the migratory journey and resettlement process.

Perpetuating factors can include limited access to basic services, including appropriate medical and mental health care, legal and financial stressors, as well as discrimination faced in the host community, all of which can contribute to poorer mental health outcomes. These migration-related and post-migration stressors can produce demoralization, grief, loneliness, loss of dignity, and feelings of helplessness as normal syndromes of distress that impede refugees from living healthy and productive lives (2, 3, 4).

#### Position:

American psychiatrists have broad skill sets for relieving suffering inflicted upon immigrants and refugees by displacement from and within their home countries and can provide direct psychotherapeutic and psychosocial interventions, as well as programmatic leadership, for the care of





***This book addresses the unique sociocultural and historical systems of **oppression** that have alienated African-American and other racial minority patients within the mental healthcare system.***

# STRESS & TRAUMA TOOLKIT FOR TREATING AFRICAN AMERICANS IN A CHANGING POLITICAL AND SOCIAL ENVIRONMENT

AMERICAN  
PSYCHIATRIC  
ASSOCIATION



**Context:** From Slavery→ Jim Crow→ civil right movement→ high incarceration→ continued racial discrimination, racial profiling, police brutality including shootings, President Trump's comments on race and African American communities, lead to ongoing trauma and stress for African Americans

## Purpose

Education

Increase awareness

Provide resources for providers





# Engaging the church in promoting climate health equity

# MOMS *clean air* FORCE

FIGHTING FOR  
OUR KIDS' HEALTH

## CommunityRX

ENVIRONMENTAL HEALTH JUSTICE

### THE PLEDGE

I, \_\_\_\_\_, commit myself to environmental justice for all. Furthermore, I commit to organize with local environmental leaders and initiatives, like Community Rx, to advocate for, educate with, and amplify the stories of African-Americans in impacted communities so that we may all go forth and fight for justice.

I vow to stand against environmental racism. I vow to stand with African-American communities who are disproportionately affected by climate change and air pollution. I vow to inform my church, community, family and friends about these issues so that we can collectively take a just stand and demand a seat at the table for environmental justice in our communities.

Lastly, I commit to making changes to my lifestyle that support protecting the earth, air and other natural resources, because I know every child has a right to breathe clean air and that right is a civil right for all.

MOMS  
*clean air*  
FORCE

CommunityRX is an environmental health justice program designed to advocate, educate, and amplify the stories of impacted communities to protect African American children and families. The program is run by Moms Clean Air Force.



# REFERENCES

1. Powers, B. W., Oriol, N. E., & Jain, S. H. (2015). Practice and protest: Black physicians and the evolution of race-conscious professionalism. *Journal of health care for the poor and underserved*, 26(1), 73-81.
2. Williams, T., & Hardison, P. (2013). Culture, law, risk and governance: contexts of traditional knowledge in climate change adaptation. In *Climate Change and Indigenous Peoples in the United States* (pp. 23-36). Springer, Cham.
3. Rosa-Aquino, P. (2018). To share or not to share? Tribes risk exploitation when sharing climate change solutions. *Grist* November 21, 2018.
4. Bult, L. (2020). A timeline of 1,944 Black Americans killed by police: Black Americans are more likely to be killed by police. The police are rarely held accountable. *Vox* June 30, 2020.
5. Kobell, R. (2019) Climate change is wiping out Harriet Tubman's homeland, and we're doing little about it Updated *Boston Globe* October 24, 2019.
6. Gordon-Achebe, K., Hairston, D. R., Miller, S., Legha, R., & Starks, S. (2019). Origins of Racism in American Medicine and Psychiatry. In: Medlock, M.M., Shtasel, D., Trinh, H.T., Williams, D.R. (Eds.) *Racism and Psychiatry: Contemporary Issues and Interventions* (pp. 3-19). Humana Press, Cham.
7. Gordon-Achebe, K., *American Psychiatric Association Stress & Trauma Toolkit for Treating African Americans in a Changing Political and Social Environment*
8. Gordon-Achebe, K., *American Psychiatric Association Position Statement: Separation of Immigrant Children and Families*, Approved by the Board of Trustees, December 2018 Approved by the Assembly, November 2018
9. Gordon-Achebe, K., *American Psychiatric Association Position Statement: Role of Psychiatrists in Addressing Care For People Affected by Forced Displacement*, Approved by the Board of Trustees, July 2017 Approved by the Assembly, May 2017
10. Fact Sheet: Climate Change in the African American Community [momscleanairforce.org/rx-climate](https://momscleanairforce.org/rx-climate) September 2019
11. Butler, L. J., Scammell, M. K., & Benson, E. B. (2016). The Flint, Michigan, water crisis: a case study in regulatory failure and environmental injustice. *Environmental Justice*, 9(4), 93-97.
12. Sullivan, K., Thakur, N. Structural and Social Determinants of Health in Asthma in Developed Economies: a Scoping Review of Literature Published Between 2014 and 2019. *Curr Allergy Asthma Rep* 20, 5 (2020). <https://doi.org/10.1007/s11882-020-0899-6>

# KIMBERLY GORDON-ACHEBE, MD, FAPA

AMERICAN  
PSYCHIATRIC  
ASSOCIATION



Medical Director of Intensive Services  
Hope Health Systems, Inc.  
2605 Banister Road /Baltimore, MD 21215  
Phone: 410.878.0236  
Fax: 410.567.0399  
[kgordon@hopehealthsystems.com](mailto:kgordon@hopehealthsystems.com)